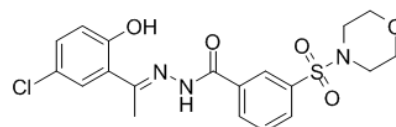


Product Name : SP2509
Cat. No. : PC-43122
CAS No. : 1423715-09-6
Molecular Formula : C₁₉H₂₀ClN₃O₅S
Molecular Weight : 437.8972
Target : Histone Demethylase
Solubility : DMSO: ≥ 33 mg/mL



Biological Activity

SP2509 is a potent, selective histone demethylase LSD1 (KDM1A) inhibitor with IC₅₀ of 13 nM, shows no activity against MAOA, MAOB, LDH and glucose oxidase; inhibits the colony growth of OCI-AML3 significantly more than of the other AML cell-types, induces more apoptosis of AML cells expressing mutant NPM1 than mixed-lineage leukemia fusion oncoproteins; significantly improves the survival of immune-depleted mice model of AML, SP2509 is synergistically lethal against cultured and primary AML blasts combined with panobinostat.

References

- Fiskus W, et al. Leukemia. 2014 Nov;28(11):2155-64.
Sonnemann J, et al. Br J Haematol. 2017 Dec 3. doi: 10.1111/bjh.14983.
Sehrawat A, et al. Proc Natl Acad Sci U S A. 2018 Mar 26. pii: 201719168.
Khanal T, et al. Sci Rep. 2017 Sep 6;7(1):10662.

Caution: Product has not been fully validated for medical applications. Lab Use Only!

E-mail: tech@probechem.com